



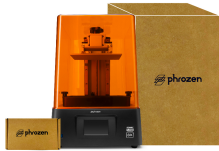
# Sonic Mini 8K

## The Most #EPIC8K LCD 3D Printer

With the highest resolution of 22 μm and 1152 ppi, Sonic Mini 8K surpasses all consumer electronics on the market. The 7.1" LCD screen & 18 cm Z-axis are perfect for printing all sorts of extremely intricate miniatures, bust sculptures, and more.



System: Phrozen OS  
 Operation: 3.5" Touch Panel  
 Slicer Software: CHITUBOX V1.9.0 or above  
 Connectivity: USB



### Easy-Open Packaging

A whole new packaging offers stronger protection and allows you to unbox the 3D printer with convenience.

Technology: Resin 3D Printer - LCD Type  
 Light Source: Linear Projection LED Module  
 XY Resolution: 22 μm  
 Layer Thickness: 0.01 - 0.30 mm  
 Max Printing Speed: 80 mm/hr  
 Power Requirement: AC100-240V~50/60Hz  
 Printer Size: L29 x W29 x H42 cm  
 Printing Volume: L16.5 x W7.2 x H18 cm  
 Printer Weight: 15 kg



### 22 μm (1152 ppi) Ultra-High Resolution

Sonic Mini 8K is the first & only 3D printer that produces high-resolution prints under 22 μm (1152 ppi), creating lifelike miniatures with highly realistic textures, pores, and wrinkles.



### Ultra-Stable Dual Linear Rails

The only compact-sized 3D printer with dual linear rails. With this feature, Sonic Mini 8K is guaranteed to create durable & high-quality 3D prints.



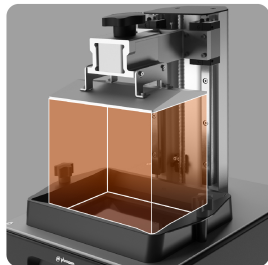
### Linear Projection LED Module for Sharp 8K Prints

The linear projection LED module effectively extends the optical path length, enhancing light uniformity by over 90% to create sharp & crisp 3D models.



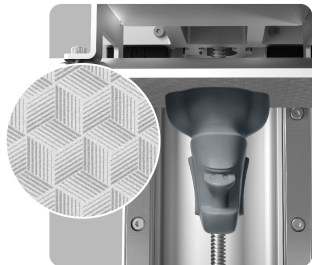
### Intuitive User Interface for Easy Navigation

Simply plug in the USB at the front of your Sonic Mini 8K, toggle through the 3.5" touch panel, and you're ready to go.



### The Larger Printing Space and Metal Resin Vat

With a larger printing space (7.1" LCD screen and 18cm Z-axis), and the durable metal resin vat, you can print larger and highly intricate miniatures with no difficulty whatsoever.



### Innovative Laser Frosted Building Plate

The all-new frosted laser cut building plate allows your 3D models to stick firmly onto the building plate, drastically improving your 3D printing success rate.